



## 2021 Challenger 350 S/N 20897



### Aircraft Highlights

US Based & Registered  
One Private Owner Since New  
475 Hours TT estimate at Dec. delivery  
Under Warranty Until December 2026  
Engines Enrolled on MSP Gold  
Airframe Enrolled on SmartParts Elite +  
10 Passenger Configuration  
GOGO L5 Avance Wi-Fi  
APU Enrolled on MSP Gold  
FANS 1/A+ (CPDLC)

**Three year or approx. 525 hours pre-paid  
Maintenance, Engine/APU program,  
Bombardier Technical Publications and  
CAMP Maintenance Tracking Payments  
included**

**Airframe:** (As of Sept. 2023)  
404 Hours Since New  
226 Landings

**APU:**  
Honeywell 36-150BD  
Enrolled on MSP

**Engines:**  
Honeywell HTF7350  
Enrolled on MSP Gold

Engine 1	404 SNEW	234 CSN
Engine 2	404 SNEW	234 CSN





JET TRANSACTIONS



For more information: [Brant Dahlfors](#)  
Corporate Office: 220 Newport Center Dr., Suite 11-660, Newport Beach, CA 92660 | Phone **805.484.6605** | Email: [info@jettransactions.com](mailto:info@jettransactions.com)

*SPECIFICATIONS SUBJECT TO VERIFICATION UPON INSPECTION*



JET TRANSACTIONS

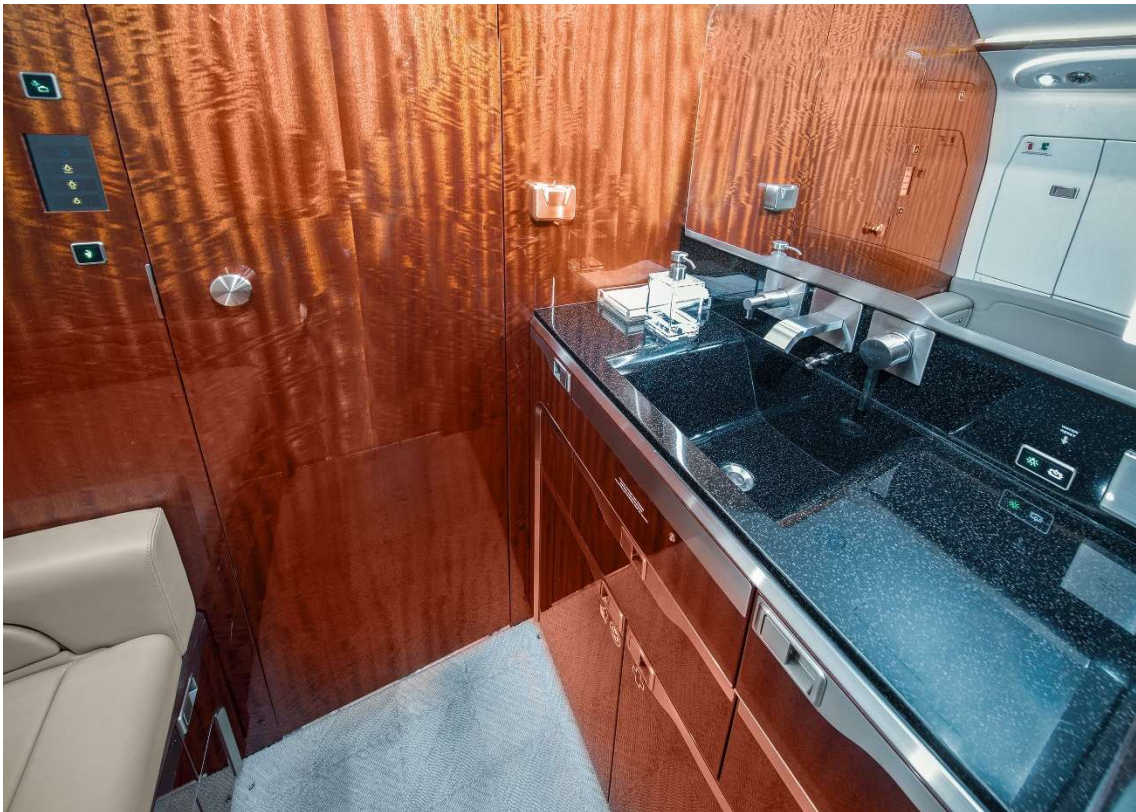
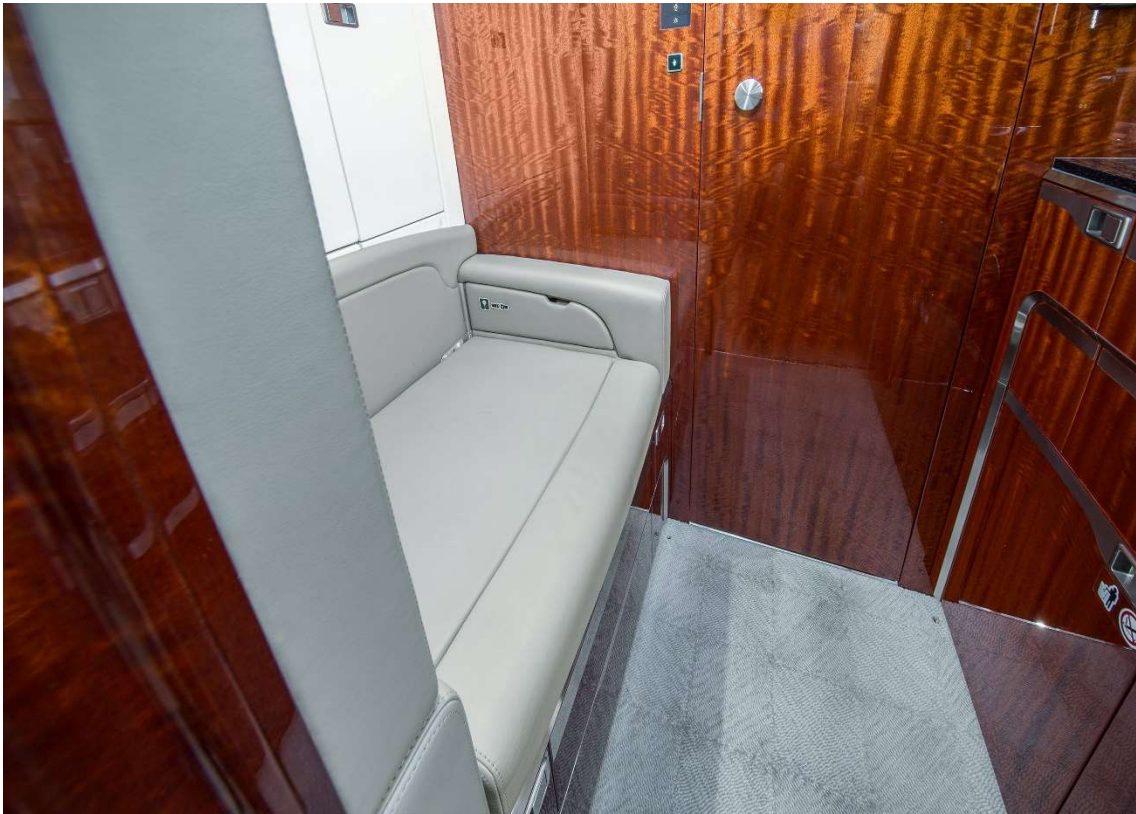


For more information: [Brant Dahlfors](#)  
Corporate Office: 220 Newport Center Dr., Suite 11-660, Newport Beach, CA 92660 | Phone 805.484.6605 | Email: [info@jettransactions.com](mailto:info@jettransactions.com)

*SPECIFICATIONS SUBJECT TO VERIFICATION UPON INSPECTION*



JET TRANSACTIONS



For more information: [Brant Dahlfors](#)  
Corporate Office: 220 Newport Center Dr., Suite 11-660, Newport Beach, CA 92660 | Phone **805.484.6605** | Email: [info@jettransactions.com](mailto:info@jettransactions.com)

*SPECIFICATIONS SUBJECT TO VERIFICATION UPON INSPECTION*



JET TRANSACTIONS



For more information: [Brant Dahlfors](#)  
Corporate Office: 220 Newport Center Dr., Suite 11-660, Newport Beach, CA 92660 | Phone **805.484.6605** | Email: [info@jettransactions.com](mailto:info@jettransactions.com)

*SPECIFICATIONS SUBJECT TO VERIFICATION UPON INSPECTION*

**Interior:** Ten (10) passenger seating

Zone 1 Four (4) Single Place Club Seats

Zone 2 Two (2) Single Place Club Seats, Three (3) Place Divan

Galley Forward Galley

Lavatory Aft with vanity (seat is belted and certified for takeoff, taxi and landing)

Baggage Accessible in-flight

Cabin Main Cabin Gaspers.

**Cabin Communication & Electrical Systems:**

4 universal outlets (115 V 60 Hz) and 8 powered USB ports

Dual SATCOM (Iridium) phone system

2 HD LCD monitors (22")

1 Blu-ray player

1 HDMI-in, 1 multimedia USB

Flat trim panel speakers

1 passenger control panel at each seat





**Avionics:** Rockwell Collins Pro Line 21 Advanced avionics suite

- Four (4) LCD display units
- MultiScan™ Weather radar system including turbulence detection
- Dual flight management systems
- Synthetic Vision System
- Triple VHF communication System
- Dual HF communication system with SELCAL monitoring
- Automatic flight control system
- Dual air data computers
- Dual VHF navigation receivers
- One (1) auto directional finder receiver
- Dual distance measuring equipment transceivers
- Dual satellite-based augmentation system GPS receivers
- Dual inertial reference systems
- Dual transponders with Mode S and ADS-B Out in non-radar areas
- One (1) radio altimeter
- Engine indication and crew awareness system
- Integrated flight information system displaying electronic charts on the MFD
- Terrain awareness and warning system including windshear detection
- Traffic collision avoidance system (TCAS II) 7.1 compliant
- Electronic flight instrument system
- Cockpit voice recorder, 2 hours
- Digital flight data recorder, 25 hours
- Emergency locator transmitter
- Integrated electronic standby instrument
- Maintenance diagnostic computer

**Additional Options:**

- C25-407 Aft Left-Hand Divan Floorplan
- C25-707 Galley Enhancement Package
- C25-628 Carpet Threshold Plates
- C23-441 Datalink Connectivity Suite (including 3<sup>rd</sup> VHF)
- C23-606 FANS1/A+ (CPDLC & ADS-C) and Iridium Satcom with Cockpit Safety Services / ACARS Communications
- C34-401 Lightning Detection System (LDS)
- C46-418 Enhanced Map Overlays
- C33-400 Dual LED Navigation Lights
- C25-706-1 Flexible self-serve galley
- C25-643-1 Microwave
- C25-498 Seat storage Aisle Side
- C25-497 Avant Garde Seat Styling
- C25-637-4 Upper AFT compartment 1 removable Shelf
- C25-631-2 Large ice Drawer Aft Zone
- \_\_\_\_\_ Auto-throttle system (to be installed by Bombardier)





### **DISCLAIMER**

This aircraft is being represented under an Aircraft Sales and Marketing Agreement between JetTransactions and the owner of the aircraft. Although JetTransactions has made reasonable efforts to verify the accuracy of the information contained above, all specifications and descriptions are provided as preliminary information and do not constitute representations or warranties. Interested parties are encouraged to conduct their own independent evaluations at a qualified facility. The Purchaser has the sole responsibility to verify the specifications and condition of the aircraft to their satisfaction. JetTransactions makes no representations as to the airworthiness of the aircraft. Aircraft subject to prior sale and removal from market.